



**ANIMETS ENGG  
PRIVATE LIMITED**

**ONE STOP SOLUTION**  
for Machine Spares Supply

- SHAFTS |**
- SPINDLE |**
- GEARS |**
- FLANGES |**
- LOCATORS |**
- HOUSINGS |**
- BEARING HOUSINGS |**
- COVERS |**

[www.animetsengg.com](http://www.animetsengg.com)

# WHO WE ARE

We manufacture precision Machined Components and Machine Spares because we understand what precision means to our clients. Therefore we go to any length to ensure that our Machined Components and Machine Spares are of the highest accuracy & quality.

The complete service range we offer includes Manufacturing of Precision Machined Components, Machine Spares, and Industrial Furnace Spares & Crane Spares.



## VISION

To become a one stop solution for Machine Spares supply across the globe.

## MISSION

To create value for the stakeholders through customer satisfaction, efficient use of resources, achieving sustainable growth, following environmental and safety norms.



# COMPANY OVERVIEW

**Animets was incorporated in March 2018. We had a proprietorship firm since 2005. We have been in business for more than 17 years.**

Animets is one of the Leading service providers. We manufacture precision Machined Components and Machine Spares because we understand what precision means to our clients. Therefore we go to any length to ensure that our Machined Components and Machine Spares are of the highest accuracy & quality.

The complete service range we offer includes Manufacturing of Precision Machined Components, Machine Spares, and Industrial Furnace Spares & Crane Spares. Apart from this, we also offer Machining of raw material on Labour Charges basis. **Animets Engineering Pvt. Ltd.** has many achievements like, starting exporting the material right from its inception. Having experience of 11 years to serve (including our previous venture) in different countries UK, USA, etc.

Our professionals use advanced machinery & systems in the manufacturing of these products & Services. The products are highly appreciated among clients for their high durability, longer service life, and dimensional accuracy & productivity, etc. Further, we offer our product range in various specifications and can be customized as per the specific requirements of our clients at reasonable price range.



# MCC SETUP

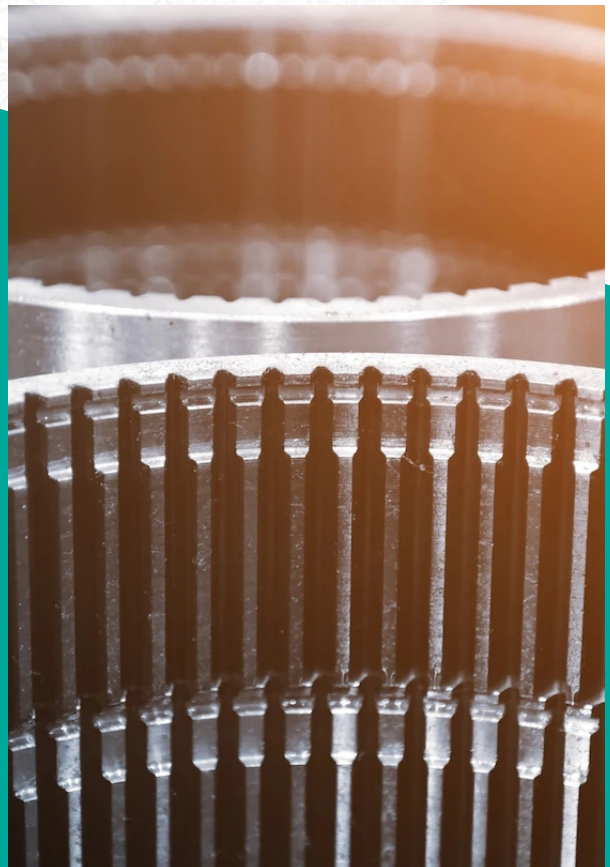


## Area Setup & Power:

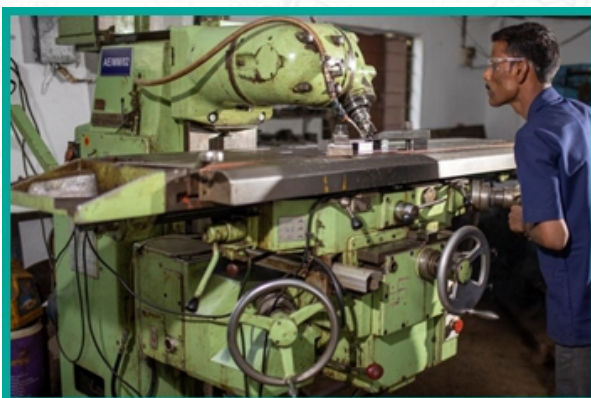
**Shed:** 1200 sq. ft. | **Power:** 60 HP

## Machines:

- Lathe Machine – 7 ft TMT Make
- Lathe Machine – 4 ft TMT Make
- Universal Milling Machine M2 Micron Make
- Universal Milling Machine Dufour Make with DRO
- MITR 4S Micromill Make
- Radial Drilling Machine Sigma Make
- Pillar type Drilling Machine Prakash Make
- Welding Transformer 400A, 2 $\emptyset$
- VMC Yam Make 700X x 460Y x 500Z with ATC
- Co2 Welding Machine 400A







# OUR PRODUCTS



**Adaptor  
SS316**



**Pyrometer Guide Bush  
Phosphor Bronze**



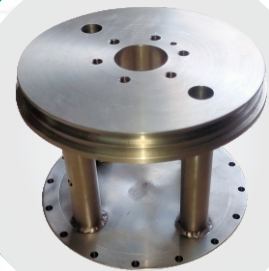
**Seal Housing  
Brass CZ121**



**Male Connector  
Brass**



**Special Stud  
SS304**



**Pyrometer Stand  
SS304**



# OUR PRODUCTS



**Male Connector 3/4"  
NPT, SS304**



**Roller  
AI HE30**



**Bearing Bush  
Leaded Bronze LB4C**



**Locating Pin  
SS304**

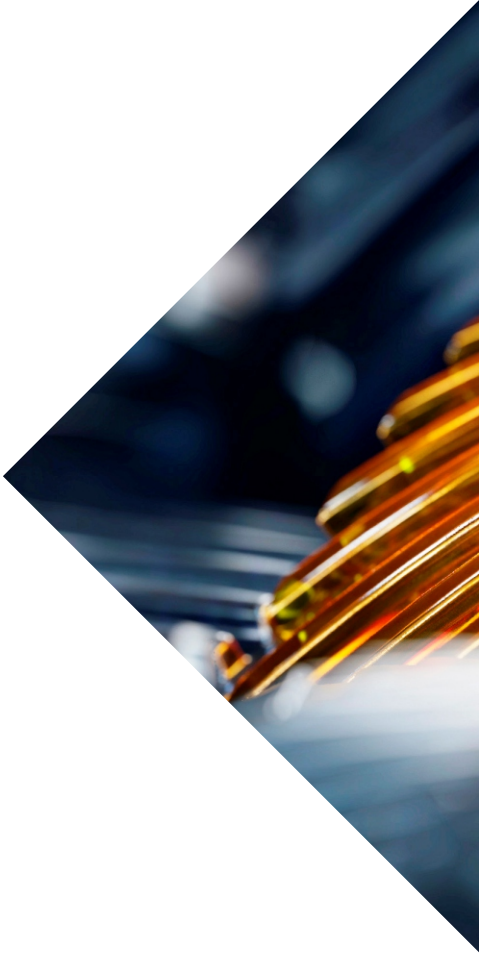


**Pyrometer Port  
Carbon Steel**



**Link, EN24  
Nitrided**

# OUR CLIENTS



**ANIMETS ENGG  
PRIVATE LIMITED**

Gat No.-325, Nanekarwadi, Chakan, Tal.-Khed, Dist.-Pune, 410501

T: +91 98232 30165 / 98907 60165 | E: sales@animetsengg.com, animetsoffice@gmail.com

W: www.animetsengg.com

CIN: U29220PN2018PTC175315 | PAN: AAQCA6290F | IEC: AAQCA6290F | GSTIN: 27AAQCA6290F1ZC